



# Spares, Service & Repair



**HAWKER SIDDELEY SWITCHGEAR**

your power in safe hands

## Spares, Service & Repair

To move forward with its current core products, utilising its award winning magnetic actuator technology, Hawker Siddeley Switchgear Ltd still offers full customer support on a variety of discontinued switchgear - our legacy or “Heritage” products.

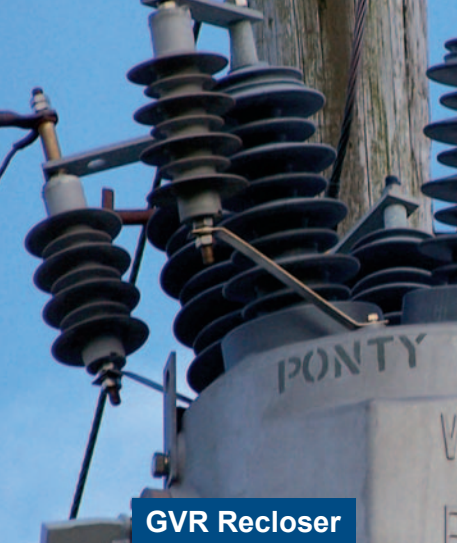


This covers spares, service and repair for an extensive range of products, supported either directly by ourselves or indirectly through an approved third party.

As an Original Equipment Manufacturer, Hawker Siddeley Switchgear Ltd have a dedicated Spares, Service & Repairs team offering a complete range of component and engineering spares, for both our current and discontinued ranges. This includes Hawker Siddeley Switchgear, Whipp & Bourne, Brush Switchgear and South Wales Switchgear.

Component type consumable spares such as main contacts, springs, trip coils and closing solenoid assemblies, through to individual components such as batteries, relays, PCB's, etc. are available for most ranges of switchgear spanning upto 50 years of production.

Hawker Siddeley Switchgear Ltd places great store in providing our valued customers with a professional aftermarket service, meeting their requirements in a timely and efficient manner.



**GVR Recloser**



**Eclipse**



**Horizon**



**Lightning**



**Horizon Compact**

### **Why buy genuine original spare parts?**

- » All spare parts are guaranteed to fit.
- » All spare parts come with an original equipment manufacturer warranty.
- » Equipment can fail as a direct result of using non original spare parts.
- » The use of non original spare parts can result in machine damage and potentially cause personal injury.

### **Hawker Siddeley Switchgear Ltd offers:**

- » Fast and reliable response.
- » Many spare parts available from stock.
- » 24/7 emergency response telephone number
- » A dedicated team of specialist field engineers with full in-depth product knowledge.
- » Worldwide sales, service and technical support.
- » Service agreements tailored to our customers' specific requirements.

### **Hawker Siddeley Switchgear Equipment currently being manufactured**

- » Eclipse - 11kV Indoor Primary Metal-enclosed Switchgear
- » GVR - 15/38kV Recloser
- » Horizon - 15/38kV Outdoor Substation Circuit Breaker
- » Lightning NDC - 4000/8000A Indoor DC Switchgear
- » Horizon Compact - 15/27kV Outdoor Substation Circuit Breaker

### **All the above products are fully supported in the following area;**

- » Design/Engineering Modifications
- » Spares
- » Operating Tools and Accessories
- » Service
- » Repair

To request a quote please visit [www.hss-ltd.com](http://www.hss-ltd.com) and follow the online instructions



MM74



Hawkvac 15



Hawkgas 12



VMV



DV

### Hawker Siddeley Equipment no longer in production

- » Hawkvac 15 - 15kV Indoor withdrawable Switchgear
- » VSI/VMV/VMVD - 12kV Indoor withdrawable Metalclad Switchgear
- » Hawkgas 12 - 12kV Indoor withdrawable Switchgear
- » Hawkgas 36 Indoor & Outdoor
- » C4X & D4X - South Wales Switchgear Indoor Switchgear
- » Various others

**All the above products are fully supported in the following area:**

- » Spares
- » Operating Tools and Accessories
- » Service
- » Repair

The future engineering support for these product ranges will be provided by ourselves or through an approved third party route, and will provide both spares and service.

Initial enquiries should be forwarded to the Spares Department at [spares@hss-ltd.com](mailto:spares@hss-ltd.com) or please visit [www.hss-ltd.com](http://www.hss-ltd.com) and follow the online instructions to request a quote or service.

### Whipp and Bourne Equipment no longer in production

- » MM74 - High Speed DC Circuit Breaker
- » MM81 - Semi-High Speed DC Circuit Breaker
- » DV Ranges - 12kV Withdrawable Metalclad Vacuum Switchgear
- » CV Ranges - 15kV Withdrawable Vacuum Switchgear
- » AK, AH, BK and BH Ranges - 3.3/6.6kV Airbreak Contactors
- » Marine IF Ranges - 415/660V Air Circuit Breakers

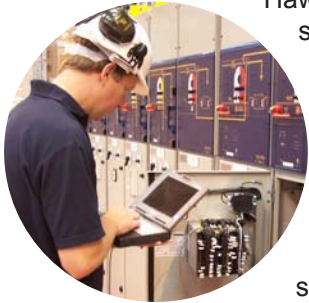
**All the above products are supported in the following area's;**

- » Spares
- » Operating Tools and Accessories
- » Service
- » Repair

The future support for these product ranges will be provided by ourselves only and will provide both spares and service.

All enquiries should be forwarded to the Spares Department at [spares@hss-ltd.com](mailto:spares@hss-ltd.com) or please visit [www.hss-ltd.com](http://www.hss-ltd.com) and follow the online instructions to request a quote or service.

## Operation and Maintenance Training



Believing that training needs to be as individual as you are, Hawker Siddeley Switchgear Ltd offers bespoke, tailor-made specialist-training courses to help your staff operate and maintain your switchgear - safely, correctly and efficiently.

These specialist courses can vary widely on chosen topics, intensity of training and length.

Programmes and courses are developed according to the level of competence of trainees and the type of switchgear or protection systems being trained on.

Hawker Siddeley Switchgear Ltd offers training either at your premises, or in purpose-built training rooms / demonstration rooms at our production factories. The former is preferable when training is required on non-production switchgear types.

Certificates as a proof of training can be issued if requested.

To request a quote please visit [www.hss-ltd.com](http://www.hss-ltd.com) and follow the online instructions.

## Servicing and Maintenance

All our engineers are fully factory trained at Hawker Siddeley Switchgear Ltd and fully conversant with all aspects of the equipment. Our world-wide comprehensive service package includes, routine maintenance (maintenance contracts and extended warranties also offered), repair, upgrades and modifications and extensions to existing installations (where supported), all with full engineering and project management support.

We offer Method Statements and Risk Assessments in accordance with our ISO9001 accreditation. Dedicated Site Quality Plans are compiled for every site contract. Hawker Siddeley Switchgear Limited comply with the latest F Gas Regulations.

To request a quote please visit [www.hss-ltd.com](http://www.hss-ltd.com) and follow the online instructions.

## Customer Returns for Investigation and Repair

If you need to return a product for repair, our Customer Return Process is designed to provide a simple and efficient service. The customer simply needs to complete a Return Report Form online, before submitting it back to Hawker Siddeley Switchgear Ltd.

Please refer to our website, [www.hss-ltd.com](http://www.hss-ltd.com) and follow the online instructions.

## **HSSL Aftermarket Services - Key Contacts**

Chris Rees  
Aftermarket Manager  
Tel: +44 (0)1495 331070  
Email: [chris.rees@hss-ltd.com](mailto:chris.rees@hss-ltd.com)

### **DC Core, Recloser's and Whipp & Bourne Heritage Products**

Greig Jones  
Aftermarket Sales Engineer- Spares, Service & Repair  
Tel: +44 (0) 1495 331023  
Email: [greig.jones@hss-ltd.com](mailto:greig.jones@hss-ltd.com)

### **AC Core and HSS Heritage Products**

Martin Bolitho  
Senior Commercial Contracts Engineer - Spares, Service & Repair  
Tel: +44 (0) 1495 331131  
Email: [martin.bolitho@hss-ltd.com](mailto:martin.bolitho@hss-ltd.com)

Andrew Tiley  
Commercial Contracts Engineer - Spares, Service & Repair  
Tel: +44 (0) 1495 331070  
Email: [andrew.tiley@hss-ltd.com](mailto:andrew.tiley@hss-ltd.com)

## **Other useful HSSL numbers:**

### **Site Services**

Karin Cegielski  
Site Services Coordinator  
Tel: +44 (0)1495 331044  
Email: [karin.cegielski@hss-ltd.com](mailto:karin.cegielski@hss-ltd.com)

### **Global Support**

Julian Moore  
Global Support Manager  
Tel: +44 (0) 1495 331175  
Email: [julian.moore@hss-ltd.com](mailto:julian.moore@hss-ltd.com)

Global Support is offered via our Global Support Manager.

**24 Hour Support - 00800 42426666**

**+44 (0)1495 331155**

**For all fax enquiries please use - +44 (0) 1495 331177**

**HAWKER SIDDELEY SWITCHGEAR**

your power in safe hands



#### **Hawker Siddeley Switchgear Ltd**

Unit 3 Blackwood Business Park, Newport Road, Blackwood, South Wales, NP12 2XH UK  
Tel: +44 (0) 0800 42426666 Fax: +44 (0) 1495 225674  
sales@hss-ltd.com

#### **Hawker Siddeley Switchgear Pty Australia**

PO Box 36, Kallangur, QLD 4503, Australia  
Tel: +61 (0) 7 3888 2333 Fax: +61 (0) 7 3888 3241  
hssaus@hss-ltd.com

#### **Hawker Siddeley Switchgear South America**

Carrera 21 No 86A-31 of 101, Bogota, Colombia  
Tel: +57 (0) 1 256 4617 Fax: +57 (0) 1 655 8915  
sales@hss-ltd.com

#### **Hawker Siddeley Switchgear Ltd Technology Centre**

2 Broadfield Distribution Centre, Heywood, Greater Manchester, OL10 2TU, UK  
Tel: +44 (0) 1706 674000 Fax: +44 (0) 1706 674001  
sales@hss-ltd.com

**[www.hss-ltd.com](http://www.hss-ltd.com)**